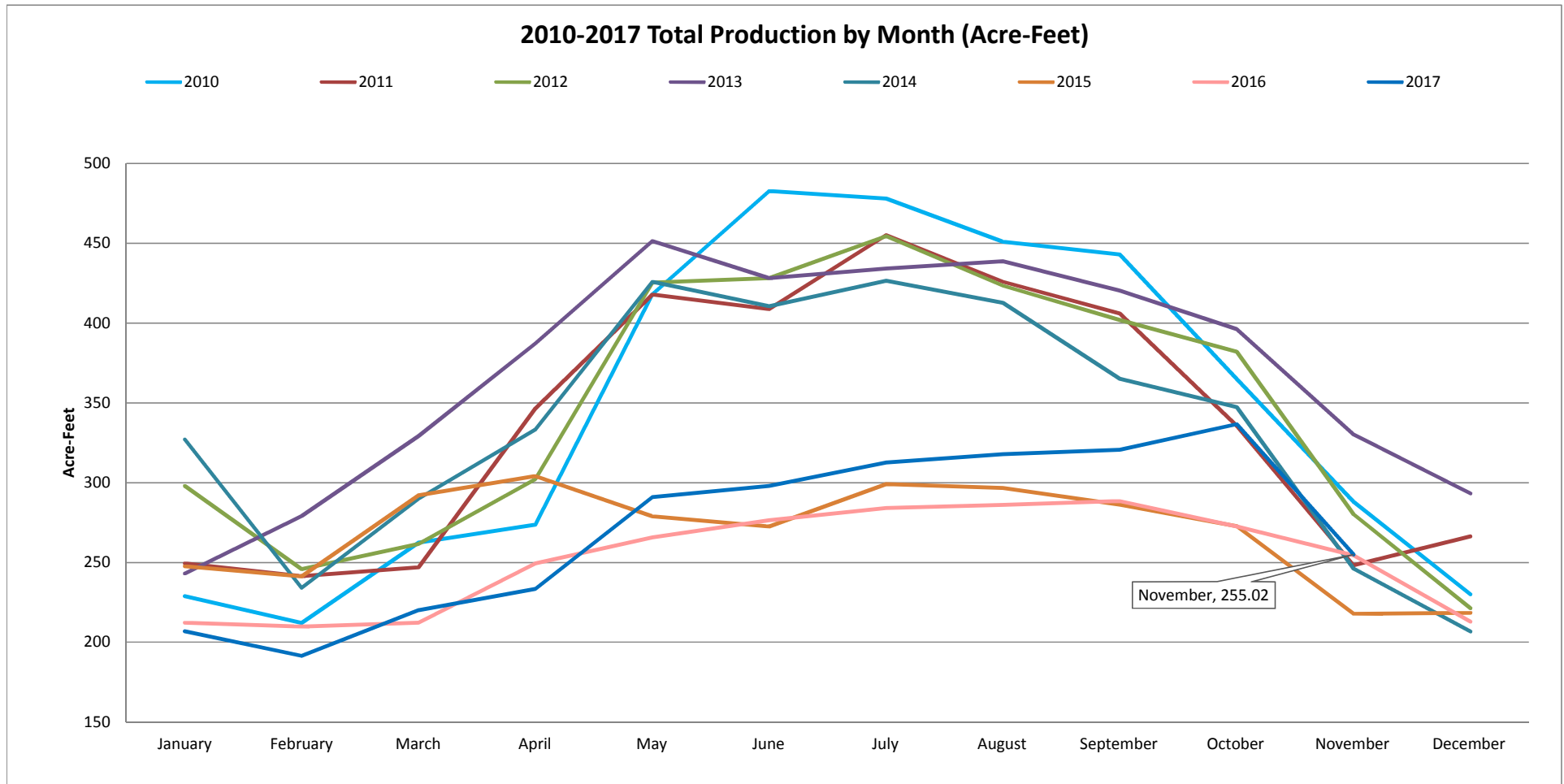


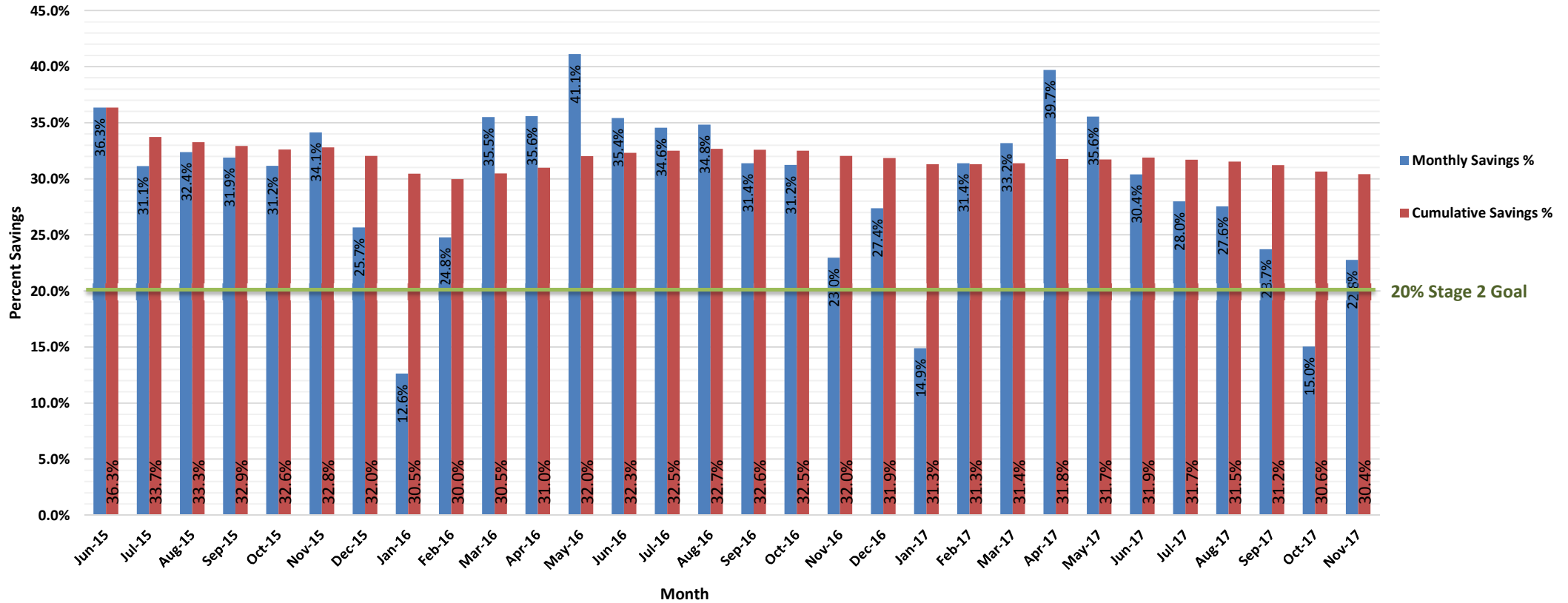
Production by Month (acre-feet)

| | 2008 | 2009 | 2010 | 2011 | 2012 | 2013 | 2014 | 2015 | 2016 | 2017 |
|--------------|----------------|----------------|----------------|----------------|----------------|----------------|----------------|----------------|----------------|----------------|
| January | 250.00 | 339.10 | 228.90 | 249.50 | 297.99 | 243.06 | 327.14 | 247.66 | 212.37 | 206.84 |
| February | 234.00 | 218.80 | 212.10 | 241.52 | 245.82 | 279.08 | 234.16 | 241.34 | 209.91 | 191.50 |
| March | 295.00 | 277.40 | 262.40 | 247.05 | 261.68 | 329.29 | 290.01 | 292.16 | 212.37 | 220.04 |
| April | 355.00 | 349.20 | 273.70 | 346.48 | 302.29 | 387.29 | 333.28 | 304.13 | 249.50 | 233.54 |
| May | 461.00 | 379.30 | 418.00 | 417.98 | 425.35 | 451.43 | 425.96 | 278.96 | 265.77 | 290.93 |
| June | 415.00 | 385.50 | 482.70 | 408.78 | 428.11 | 428.11 | 410.62 | 272.52 | 276.51 | 297.99 |
| July | 415.00 | 415.80 | 478.00 | 455.12 | 454.50 | 434.25 | 426.58 | 299.06 | 284.18 | 312.72 |
| August | 410.00 | 395.30 | 451.00 | 425.96 | 423.48 | 438.85 | 412.77 | 296.76 | 286.02 | 317.94 |
| September | 395.00 | 371.00 | 443.00 | 406.01 | 402.02 | 420.44 | 365.20 | 286.33 | 288.48 | 320.70 |
| October | 369.00 | 326.80 | 365.00 | 335.59 | 382.08 | 396.27 | 347.40 | 272.82 | 272.52 | 336.66 |
| November | 303.00 | 308.70 | 288.00 | 248.27 | 280.19 | 330.21 | 246.12 | 217.89 | 254.41 | 255.02 |
| December | 267.00 | 270.70 | 230.00 | 266.38 | 221.32 | 293.26 | 206.69 | 218.41 | 212.98 | |
| TOTAL | 4169.00 | 4037.60 | 4132.80 | 4048.64 | 4124.83 | 4431.54 | 4025.93 | 3228.04 | 3025.02 | 2983.88 |

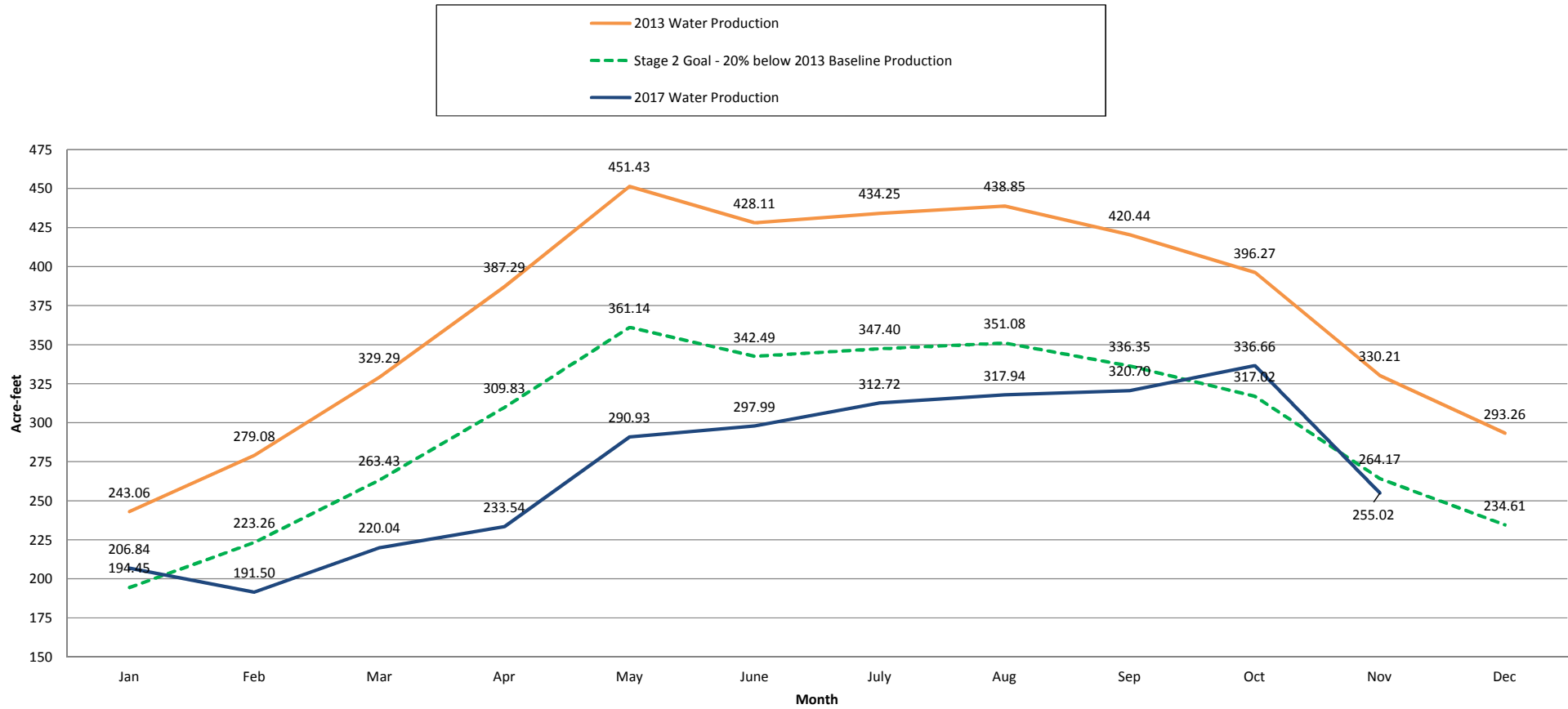
* Production data taken from Marina Coast Water District Well Production Summaries



Monthly Production Savings and Cumulative Savings Compared to 2013 June 2015 to Current Month



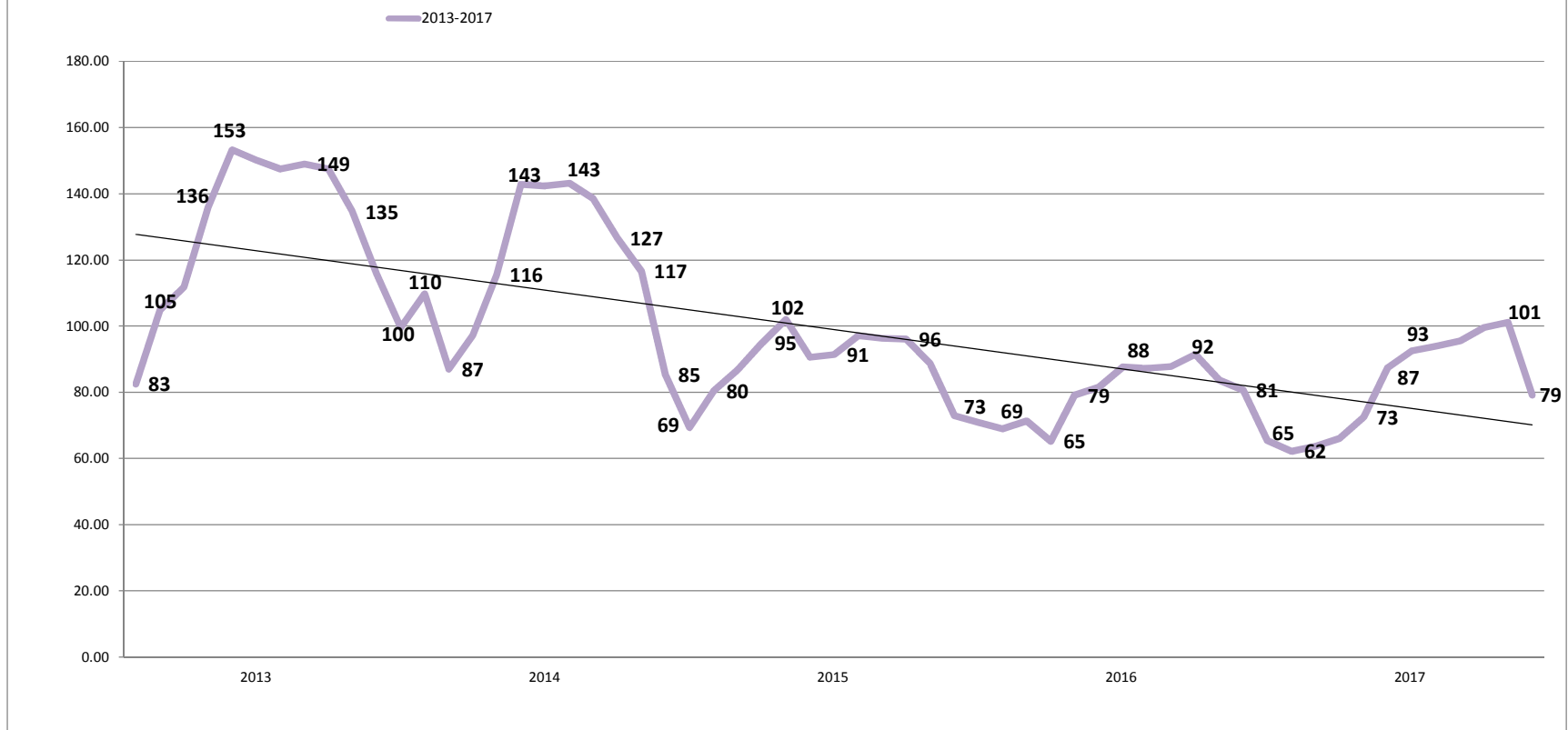
2017 Production VS. Water Production Reduction Goals



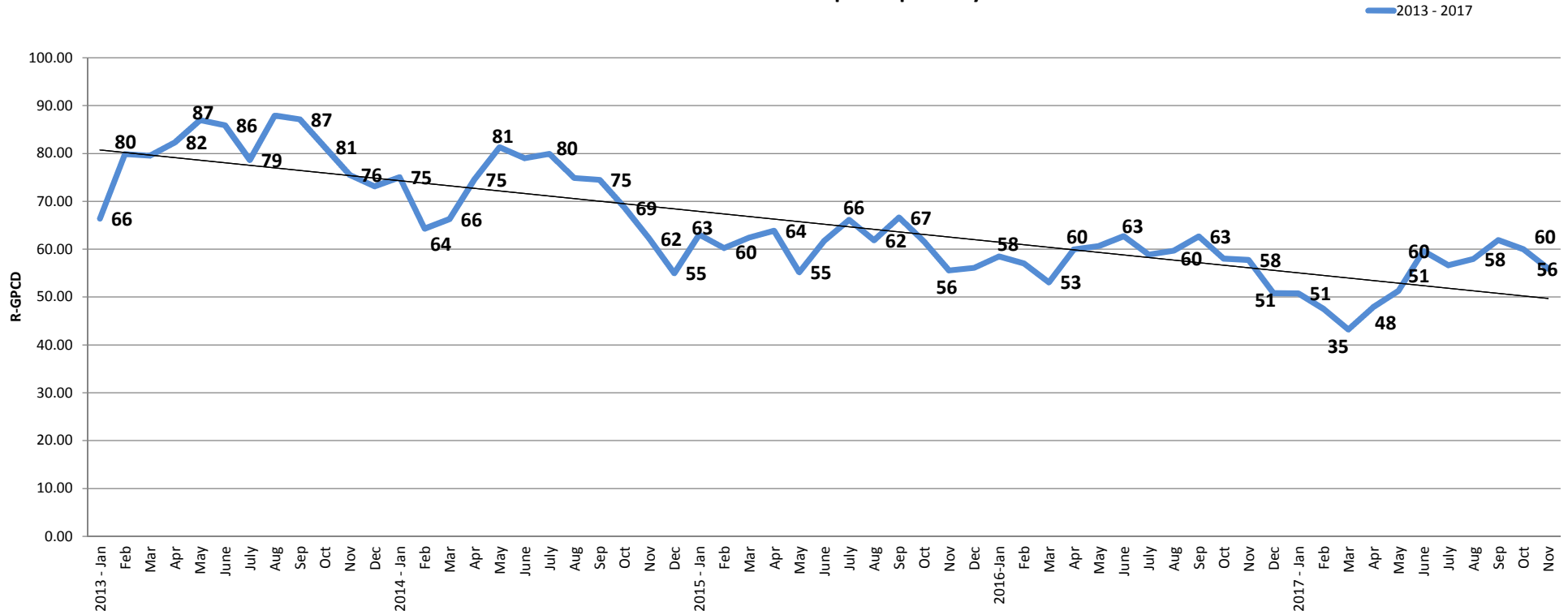
District Baseline and GPCD Targets (Gross Production)

| Description | Year | Amount (gpcd) |
|-----------------------------------|------|---------------|
| Baseline GPCD | 2008 | 133 |
| Maximum Allowable Target | 2020 | 126 |
| Interim GPCD Target | 2015 | 125 |
| 2020 GPCD Target | 2020 | 117 |
| 2014 GPCD | 2014 | 115 |
| 2015 GPCD | 2015 | 89 |
| 2016 GPCD | 2016 | 79 |
| 2017 GPCD (January-Current Month) | 2017 | 83 |

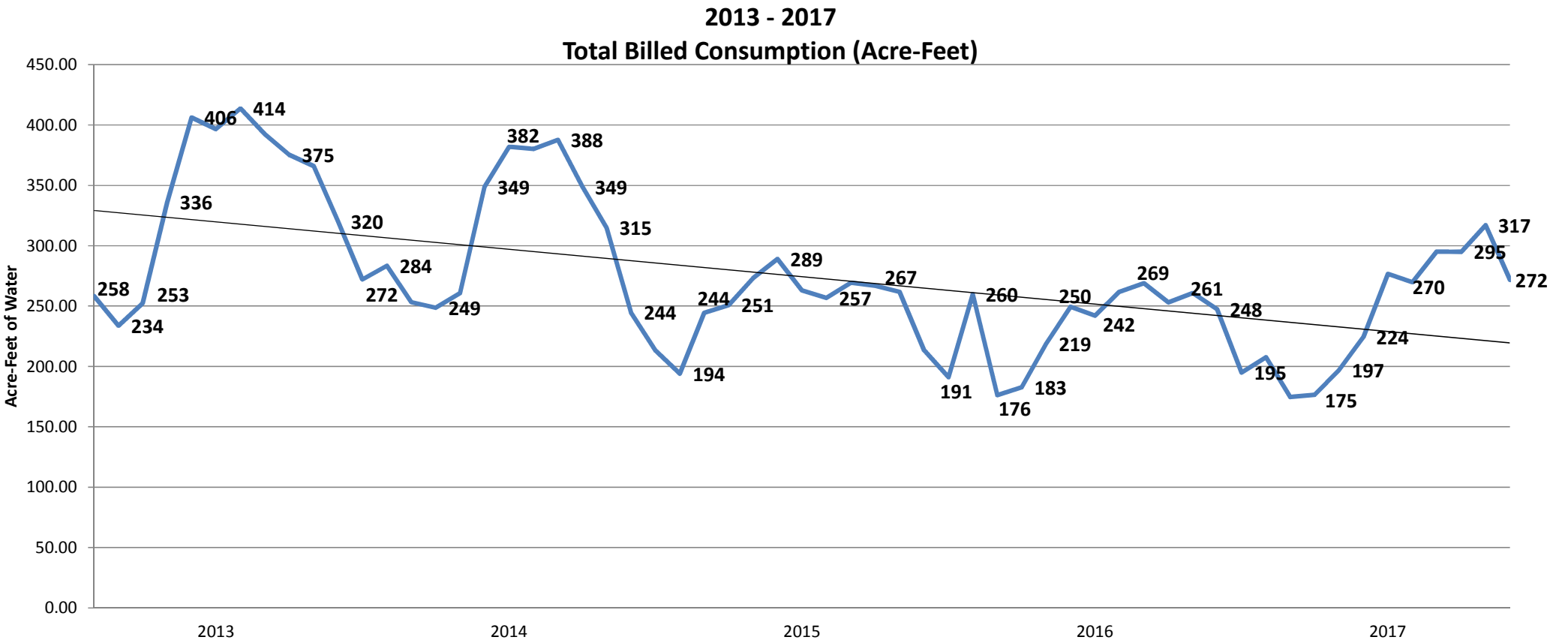
2013-2017 Monthly Gallons Per Capita Day (Gross Production)



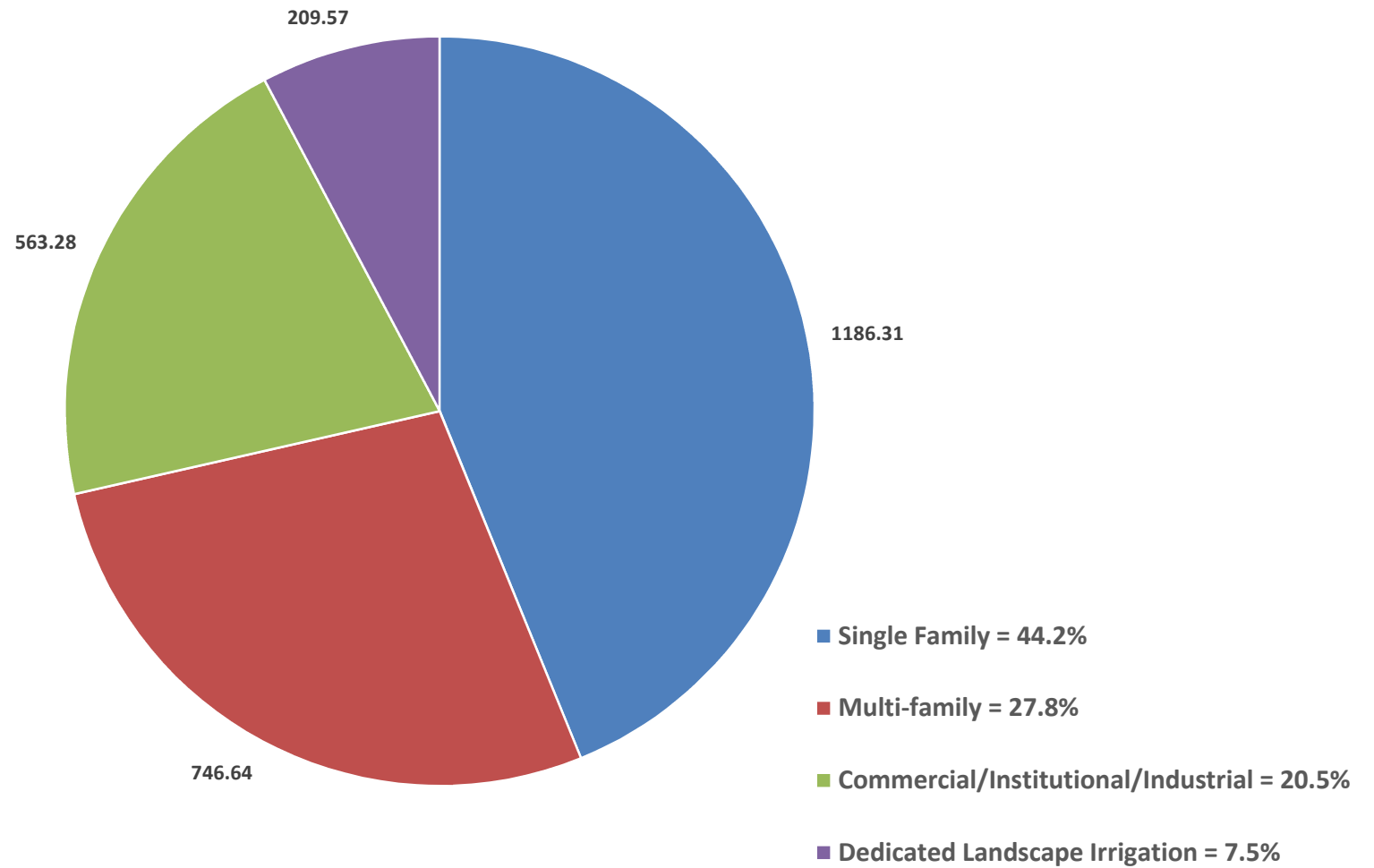
2013-2017 Residential Gallons-per-Capita-Day



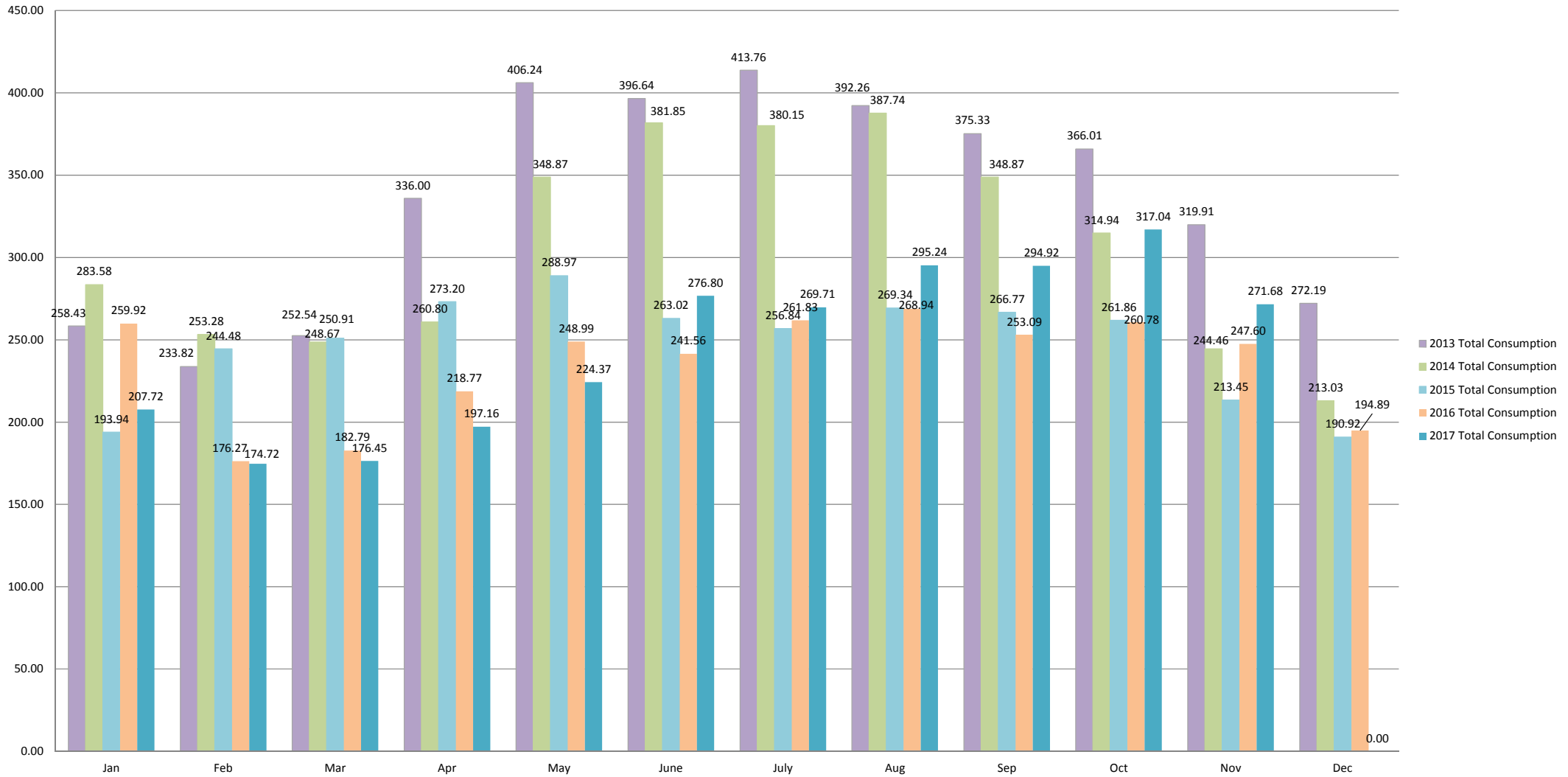
* Population figures taken from "Marina & Ord Population Figures" spreadsheet.



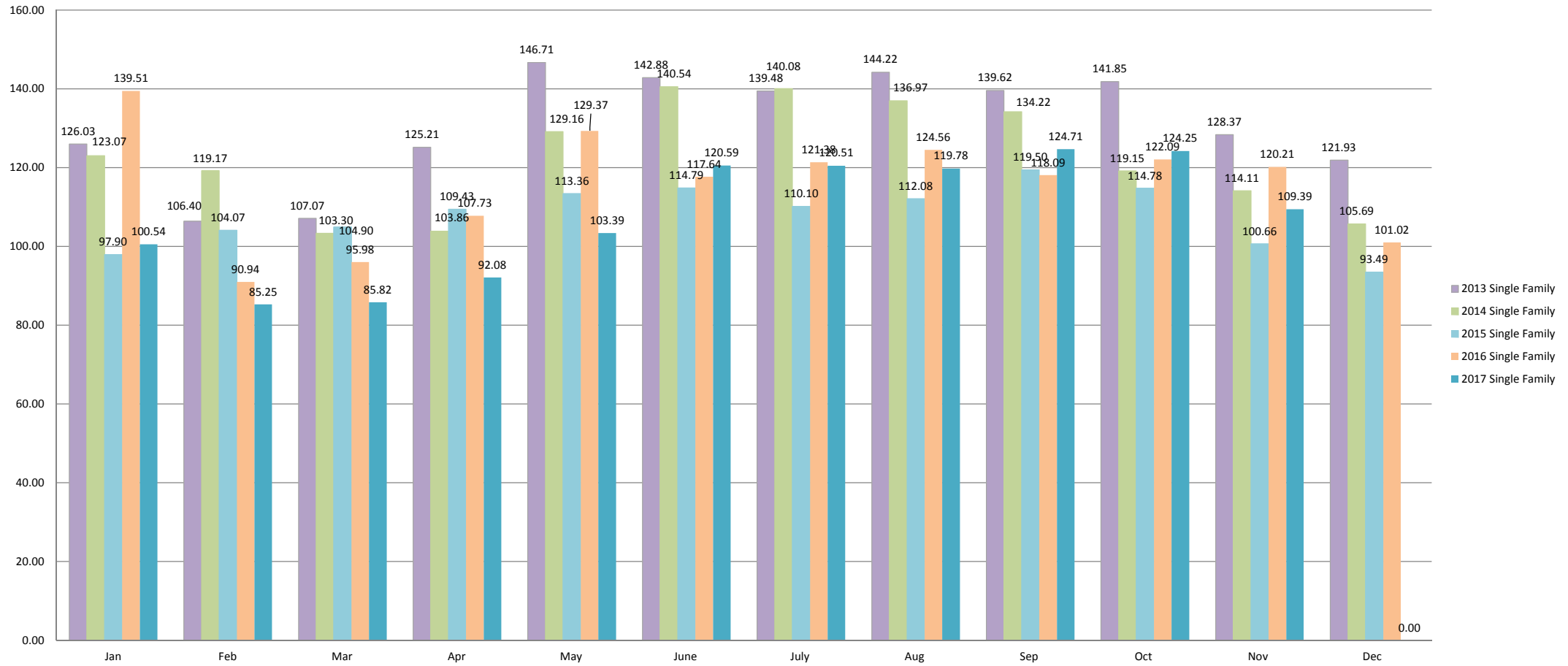
Total Billed Consumption 2017 Year-To-Date (Acre-Feet)



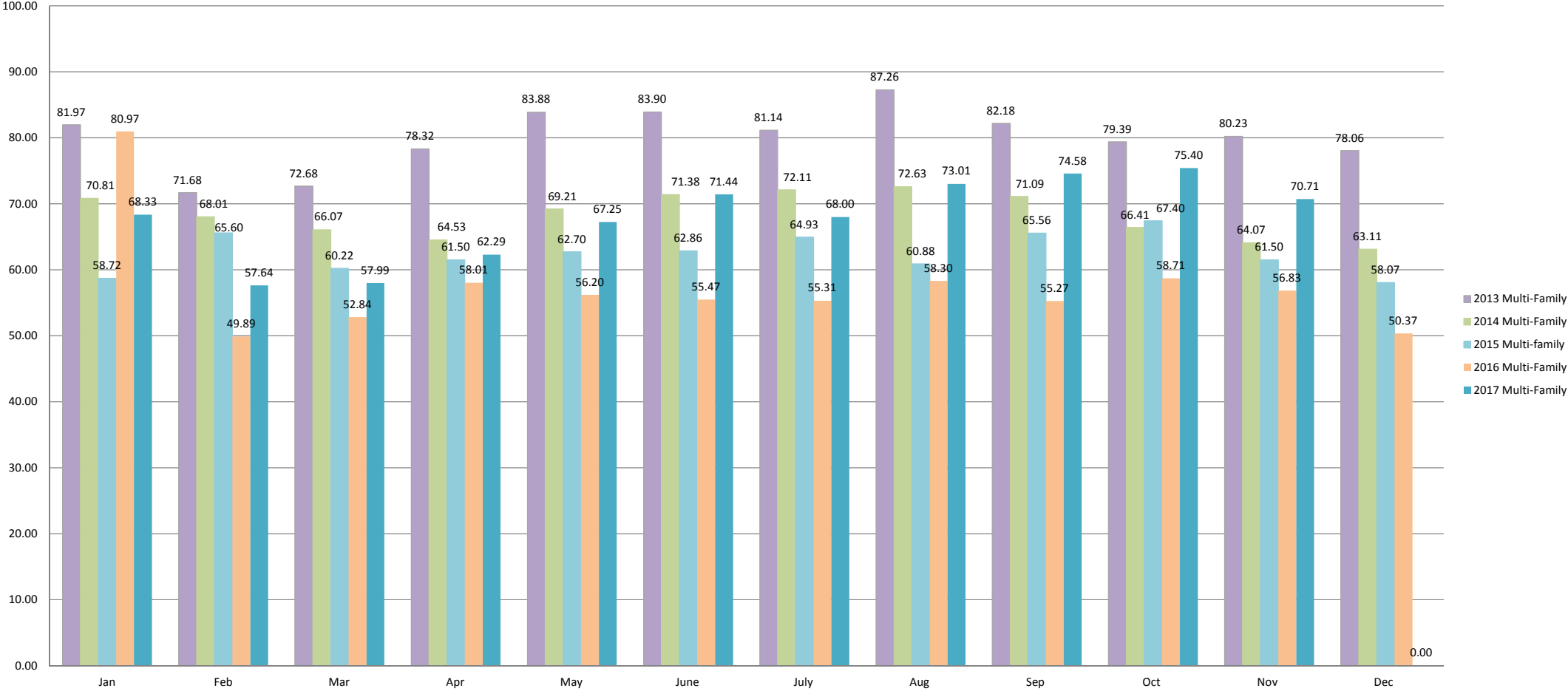
2013-2017 Total Consumption by Month (Acre-Feet)



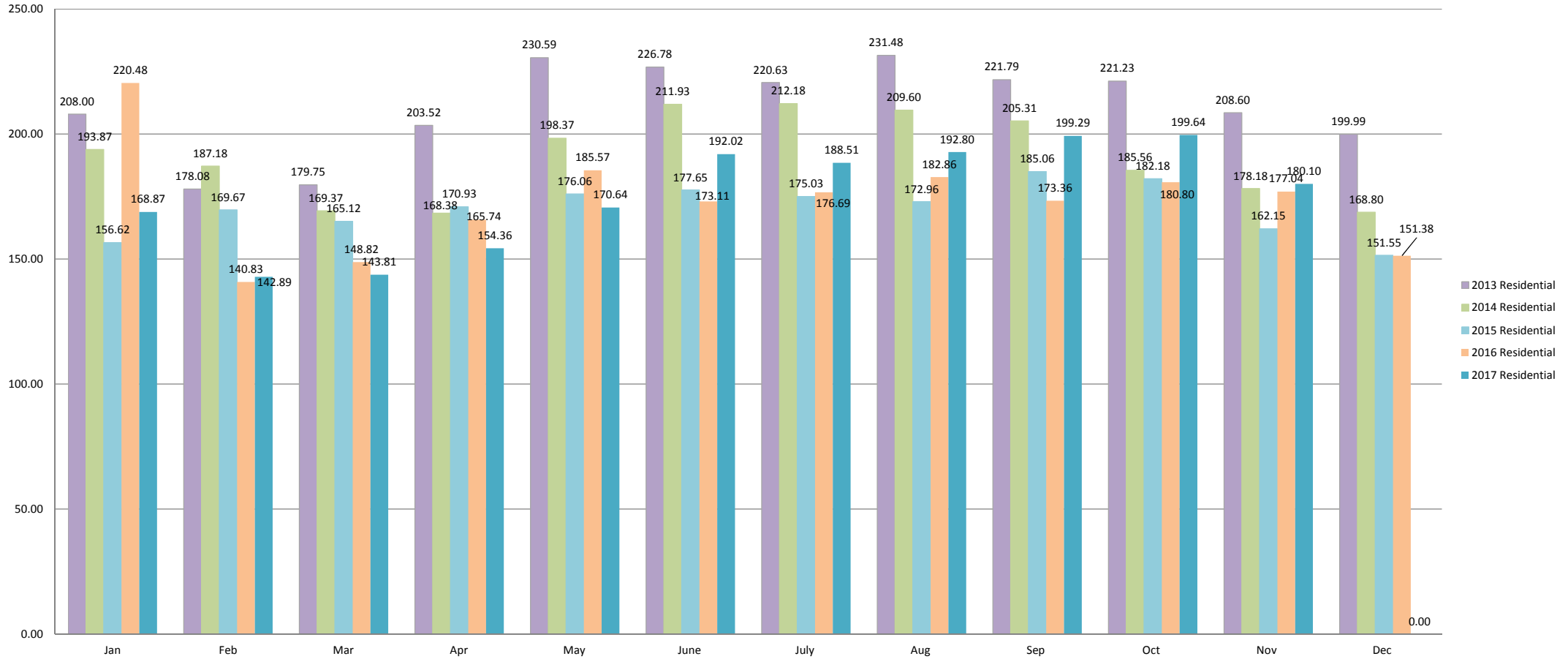
2013-2017 Single Family Consumption by Month (Acre-Feet)



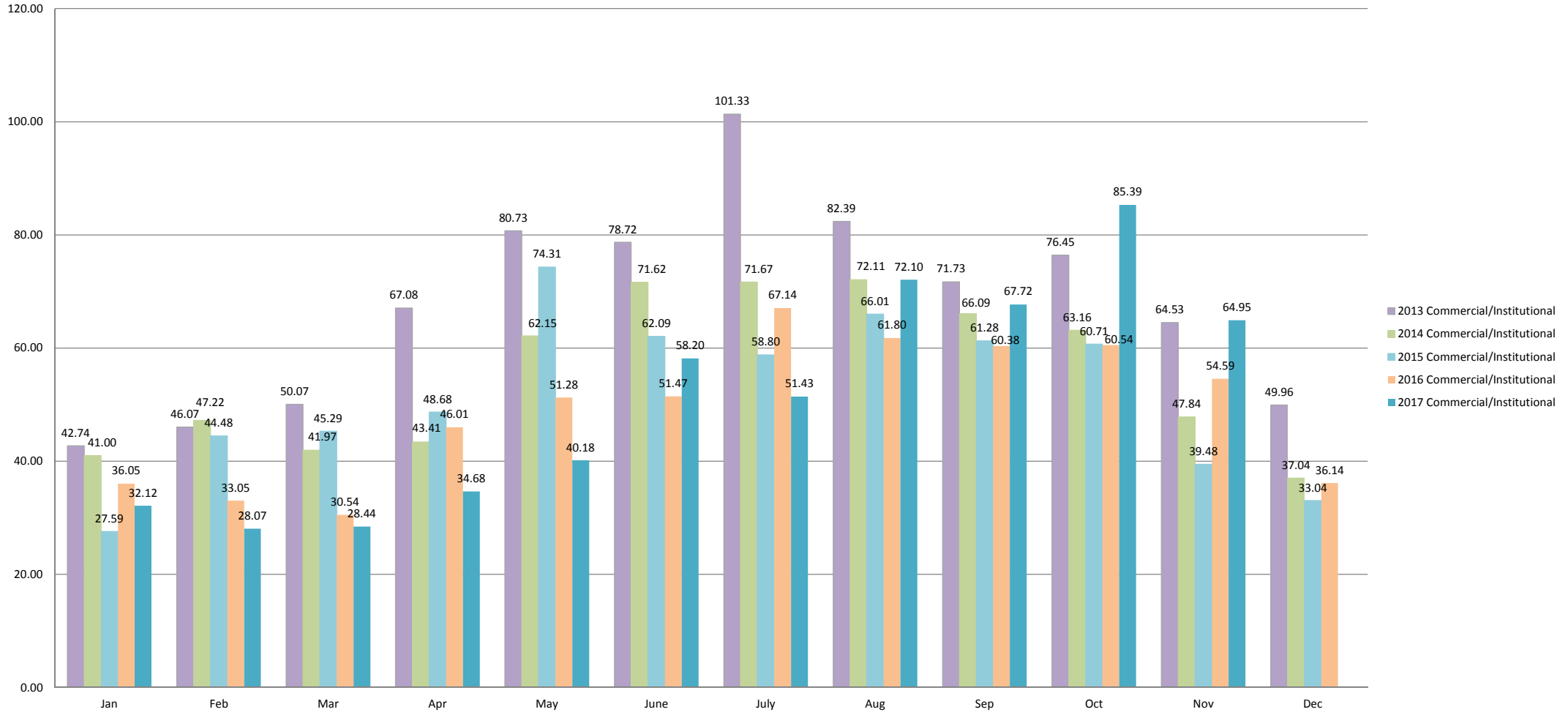
2013-2017 Multi-Family Total Consumption by Month (Acre-Feet)



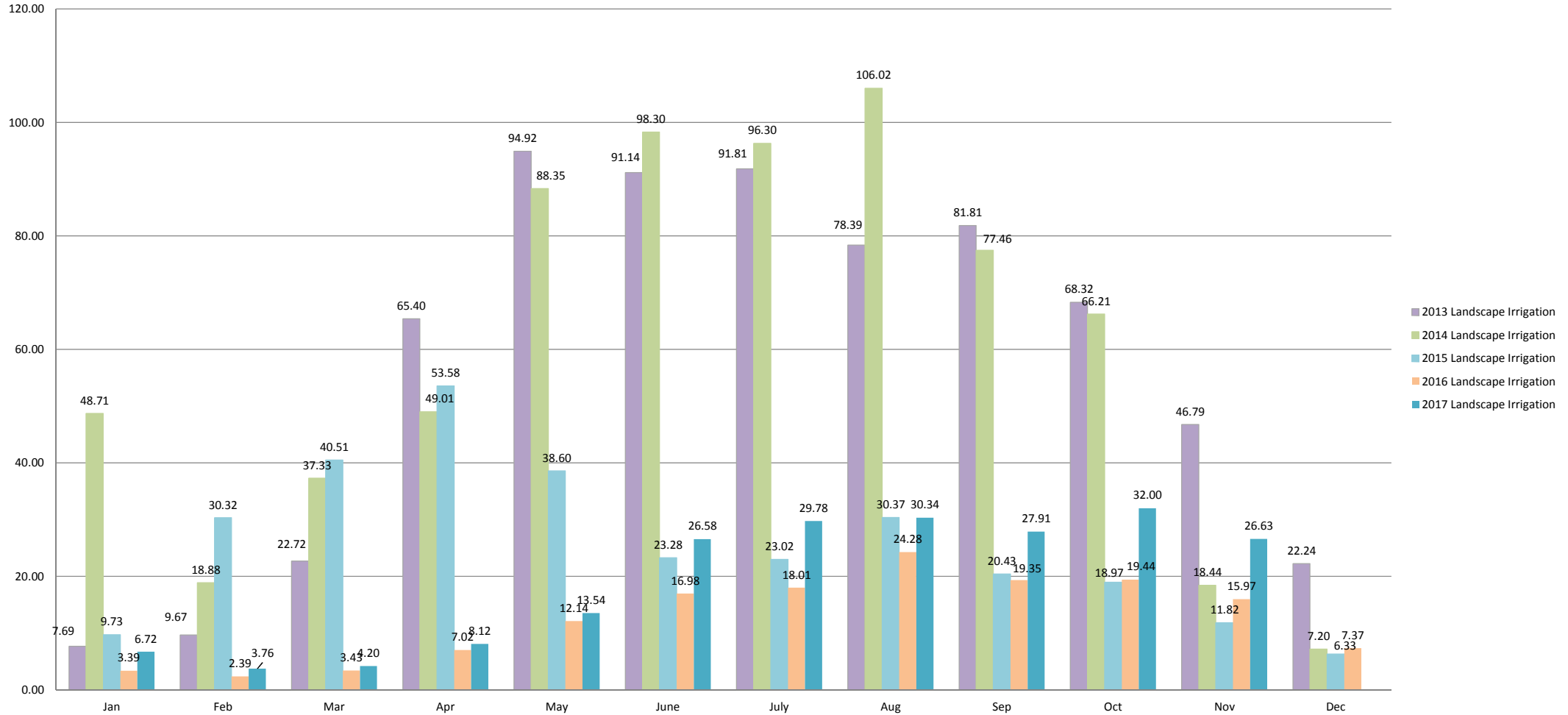
2013-2017 Residential Total Consumption by Month (Acre-Feet) (Single-Family and Multi-family Combined)



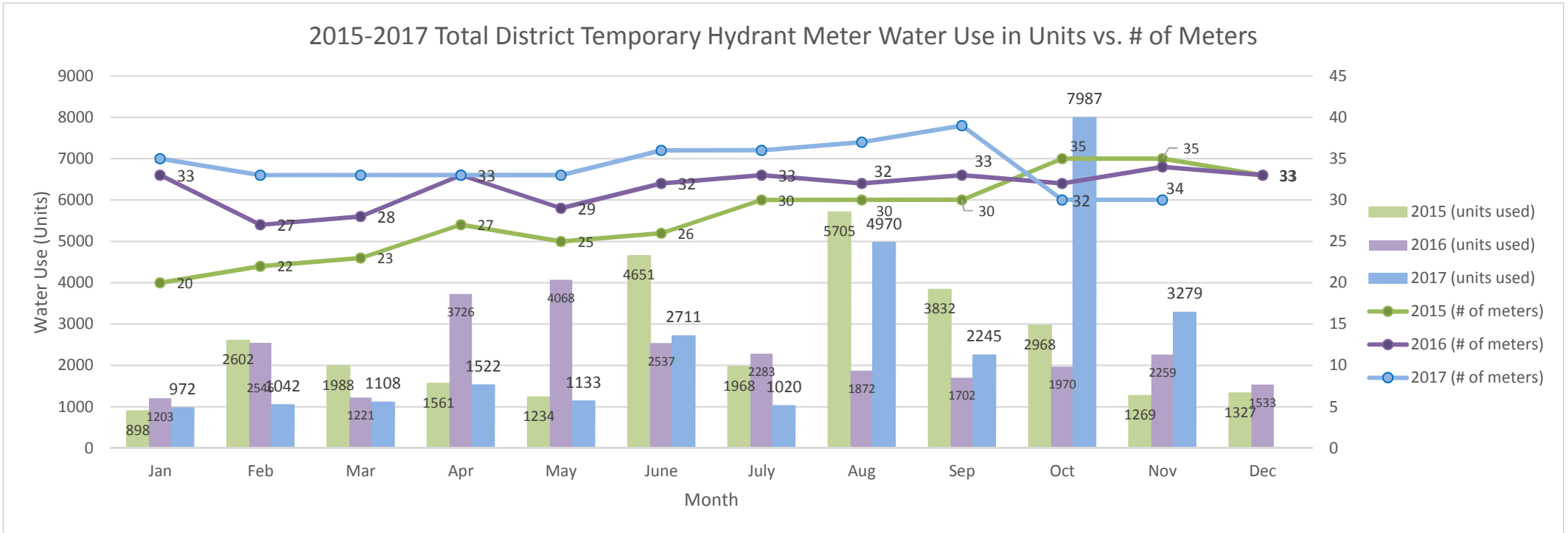
2013-2017 Commercial/Institutional Consumption by Month (Acre-Feet)



2013-2017 Landscape Irrigation Consumption by Month (Acre-Feet)



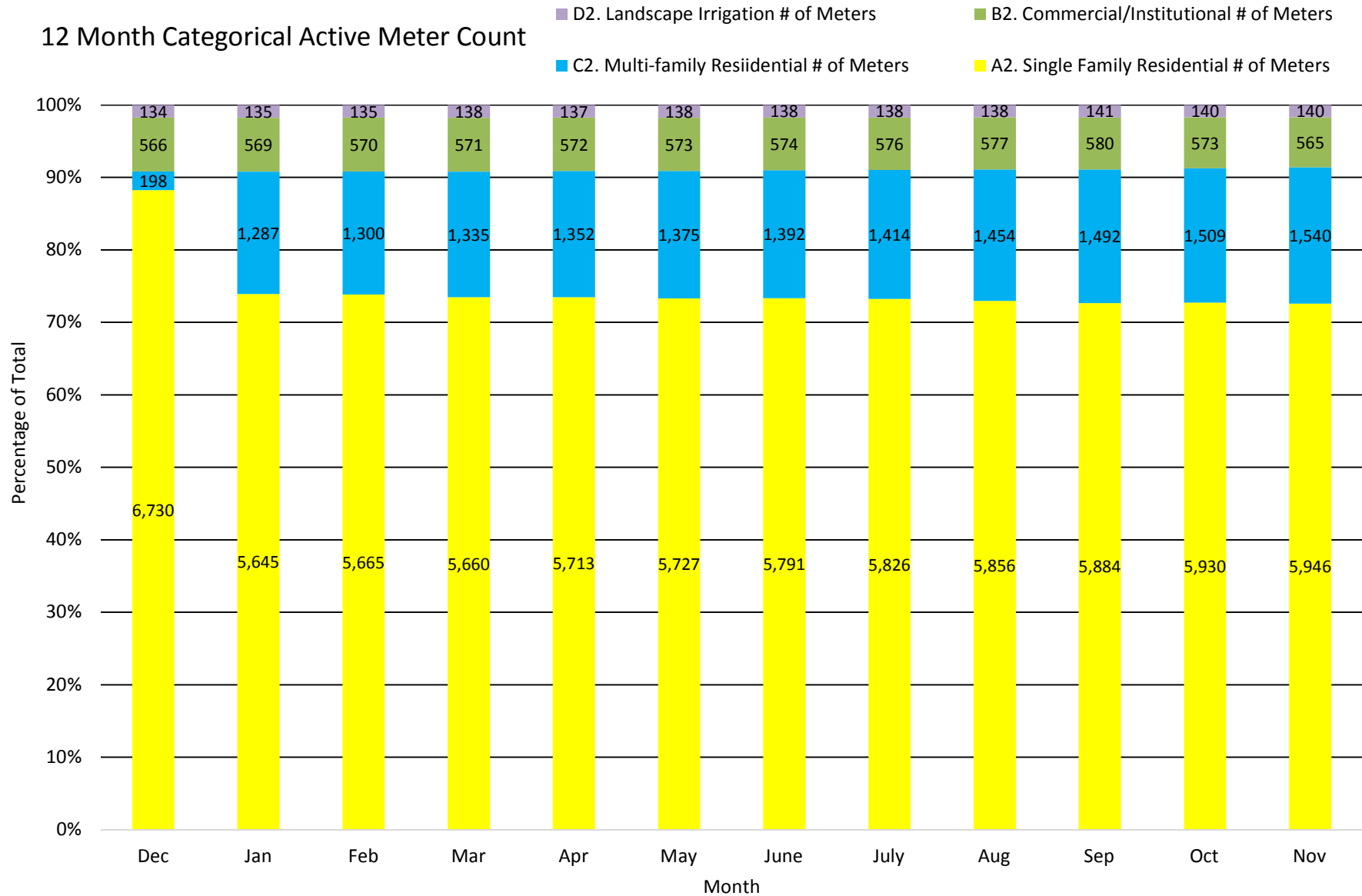
2015-2017 Total District Temporary Hydrant Meter Water Use in Units vs. # of Meters



Temporary Meter Water Use: Percentage of Total Consumption

| Past 12 Months | | | | | | | | | | | | |
|------------------------------------|--------|--------|--------|--------|--------|--------|---------|---------|---------|---------|---------|---------|
| | Dec | Jan | Feb | Mar | Apr | May | June | July | Aug | Sep | Oct | Nov |
| Consumption (HCF) | 84,901 | 90,487 | 76,112 | 76,868 | 85,890 | 97,742 | 120,581 | 117,495 | 128,613 | 128,475 | 138,112 | 118,352 |
| Temporary Hydrant Use (HCF) | 1533 | 972 | 1042 | 1108 | 1522 | 1133 | 2711 | 1020 | 4970 | 2245 | 7987 | 3279 |
| Percentage | 1.8% | 1.1% | 1.4% | 1.4% | 1.8% | 1.2% | 2.2% | 0.9% | 3.9% | 1.7% | 5.8% | 2.8% |

12 Month Categorical Active Meter Count



2015 - 2017 Active Meter Count vs. Metered Consumption in Acre-Feet

